

Adobe Photoshop CC 2015 plugin turns your photos to new level.

Get all previews in one click before use.

Here you can see examples <http://klaia.com/imaginer/>

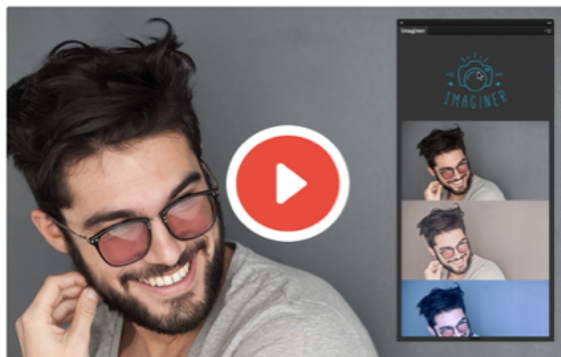
This set of 11 professional photo effects. They enhance and add more beautiful colours for photos and make a photo look stunning.

Our plugin is suitable amateur and professional photographers to make their photos, fashion and portrait photography is unique and

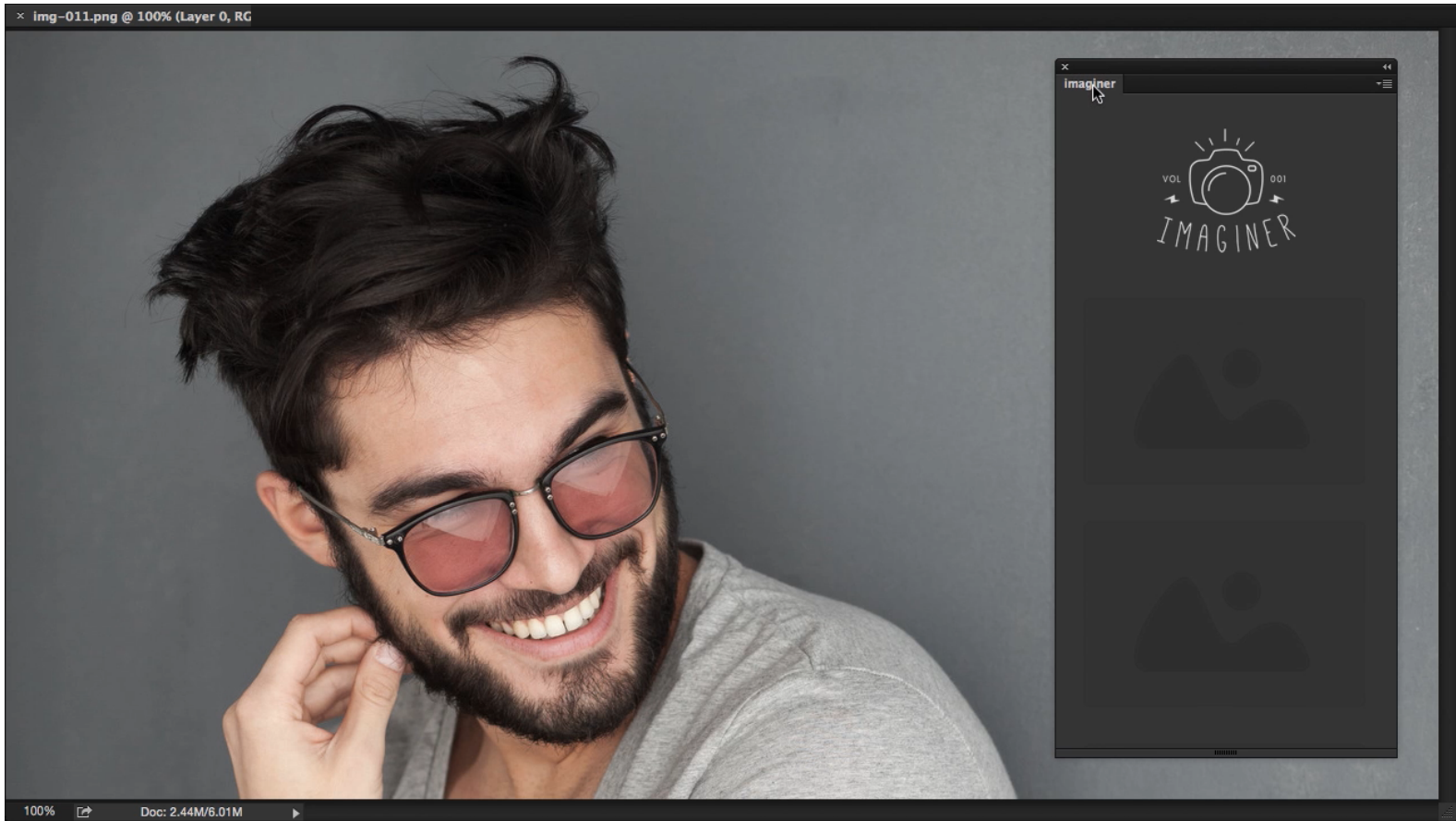
look great. With this set you can quickly and easily add a professional finish to your images.

imaginer@klaia.com

HOW TO USE

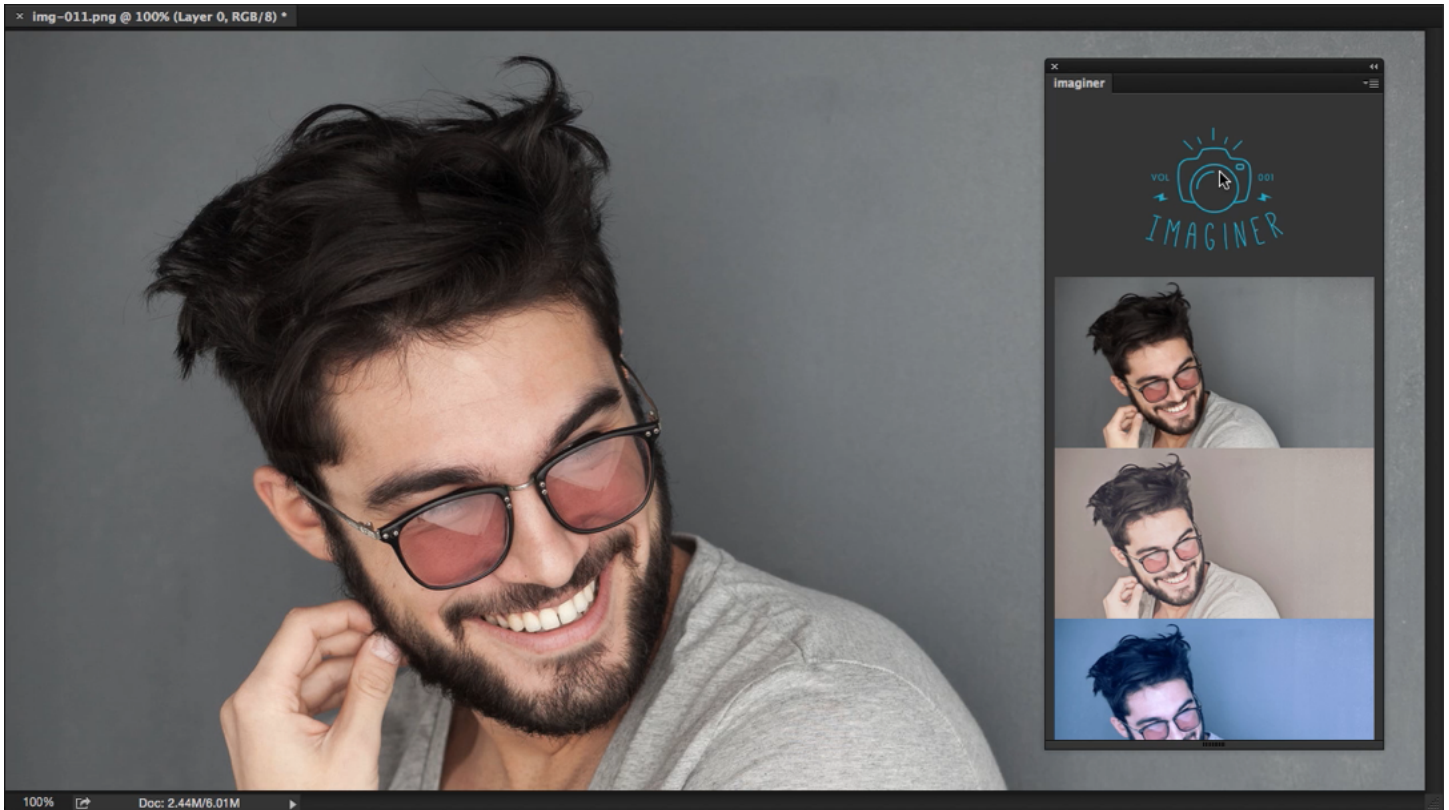


STEP 01



Open picture and Imager Panel

STEP 02



Click on logo will generate preview

STEP 03



Apply filter by clicking on preview

IMAGINER

Result Examples:





001 – Imaginer: **Lowsa**





002 – Imaginer: **Coldy**





003 – Imaginer: **Retra**





004 – Imaginer: **Oldy**





005 – Imaginer: **Dream**



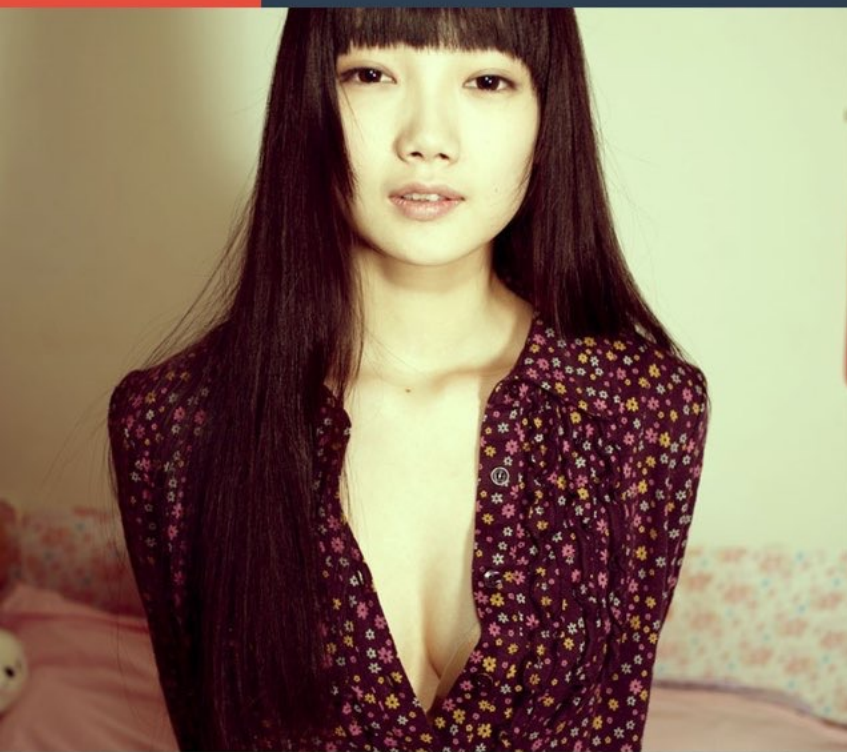


006 – Imaginer: **Warmy**





007 – Imaginer: **Vintage**



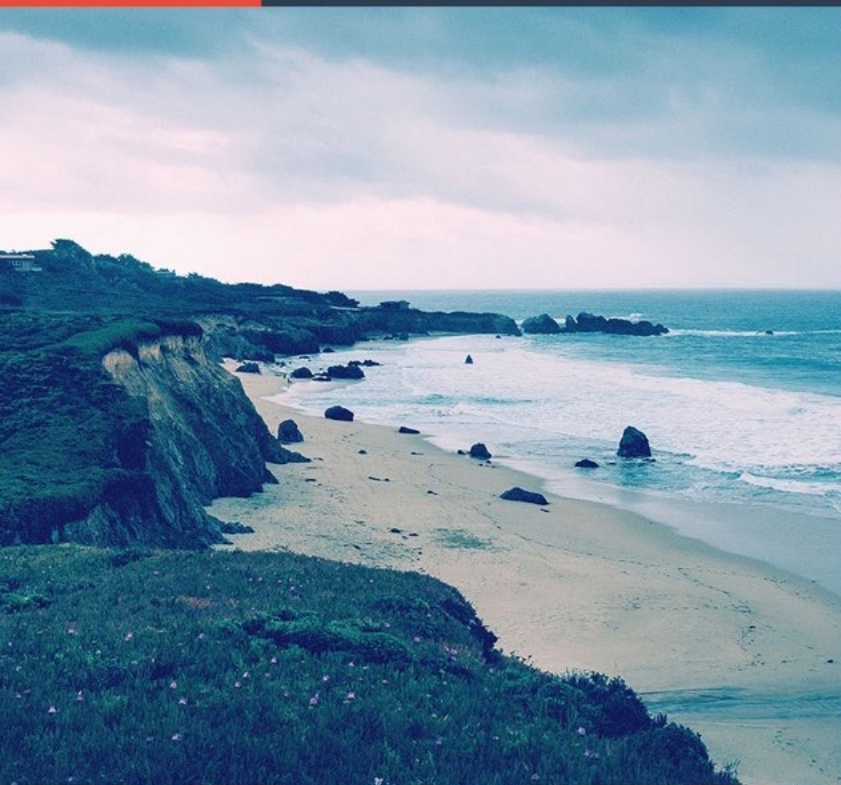


008 – Imaginer: **Maverick**



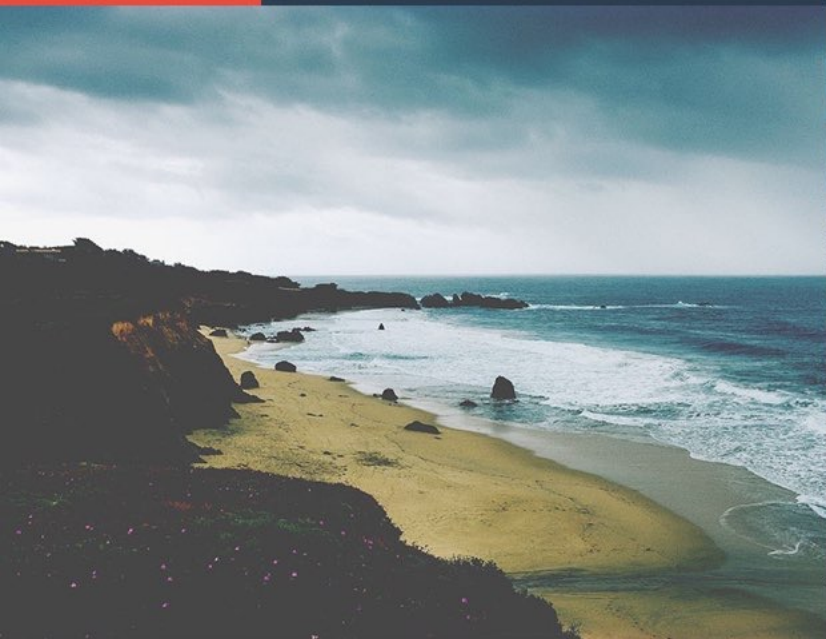


009 – Imaginer: **Freshy**





010 – Imaginer: 1980





011 – Imaginer: **Blacky**



INSTALLATION

After successful installation you need to restart Photoshop and could run Imager from Photoshop menu Window → Extensions → Imager

Windows 32 bit

Put "Imaginer" directory to "C:\Program Files\Common Files\Adobe\CEP\extensions\". So finally you will have file with path "C:\Program Files\Common Files\Adobe\CEP\extensions\Imaginer\index.html". Be careful not to add any additional directories between

Windows 64 bit

Put "Imaginer" directory to "C:\Program Files (x86)\Common Files\Adobe\CEP\extensions\". So finally you will have file with path "C:\Program Files (x86)\Common Files\Adobe\CEP\extensions\Imaginer\index.html". Be careful not to add any additional directories between

Mac OS X

Put "Imaginer" directory to "C:\Program Files (x86)\Common Files\Adobe\CEP\extensions\". So finally you will have file with path "C:\Program Files (x86)\Common Files\Adobe\CEP\extensions\Imaginer\index.html". Be careful not to add any additional directories between